



**GROUPE**

**ALTAN**

**Reach new heights  
with us!**

2025 Service Offer



# About Groupe Altan

We are pioneers in comprehensive and tailored solutions for all your industrial projects throughout Quebec. Our turnkey service offering covers everything from design to installation across various industrial sectors. With us, you will find all the necessary services grouped in one place.

Our commitment is to provide you with the best possible service, considering your real needs and unique reality.

**50<sup>+</sup>**

EMPLOYEES &  
PROFESSIONALS

**30<sup>+</sup>**

YEARS OF COMBINED  
EXPERIENCE

**2 000<sup>+</sup>**

MAJOR PROJECTS  
COMPLETED





# Services offered

in a variety of environments



## Mining Industry



We revolutionize mining operations with our custom-designed equipment.

Our environmentally friendly and sustainable technologies make all the difference.



## Forestry Industry



We specialize in advanced system integration for automation.

Our expertise optimizes resource use while ensuring equipment reliability.



## Cranes & Lifting



We are experienced in lifting and cranes throughout Quebec.

Our recognized expertise in handling heavy loads allows us to be efficient throughout the execution of your projects.



## Pulp & paper Industry



We elevate pulp and paper operations by designing cutting-edge equipment.

We develop technologies with a strong commitment to environmental sustainability.



## Food Industry



We streamline food processing operations with our custom-designed equipment.

This enables our clients to maximize their productivity while staying competitive in the market.



## Heavy mobile equipment



We repair your equipment with customized preventive and corrective mechanical-welding maintenance.

We also service your ground engaging tools (G.E.T.) using wear parts from trusted suppliers.



# Our expertise

from one project to the next



**Fournier**

Design, fabrication, and installation of multiple ladder platforms on a concrete silo, ensuring secure and efficient access for maintenance operations.



**WESDOME**

Coordination, lifting plan design, on-site supervision, and anchor point fabrication for your underground and confined space mining lifting projects.



Project management and full coordination of the work for the implementation of new loading bays, ensuring compliance with technical requirements and deadlines.



Fabrication and installation of a custom temporary structure for an annual maintenance shutdown at a mining site in the Malartic area.



# Our expertise

from one project to the next



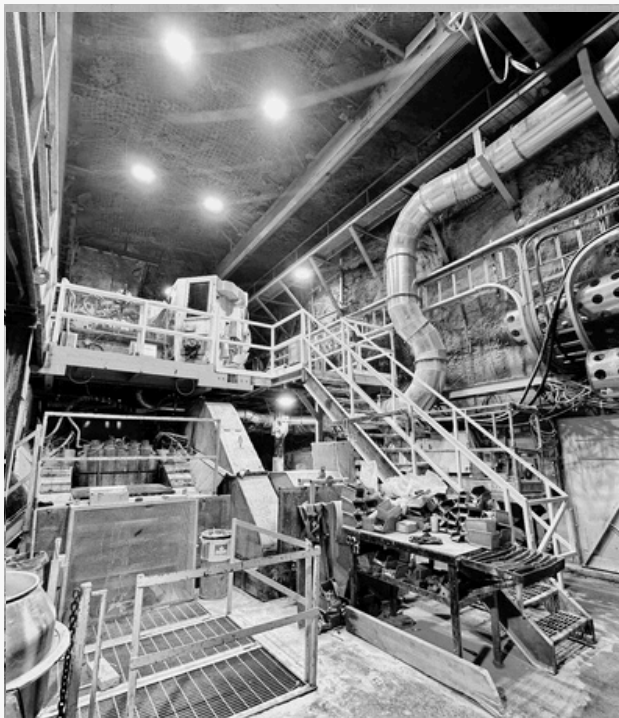
**ARBEC**  
FOREST PRODUCTS

Design, fabrication, and installation of a 2-ton overhead crane and a custom-built modular door for an industrial project in the forestry sector.



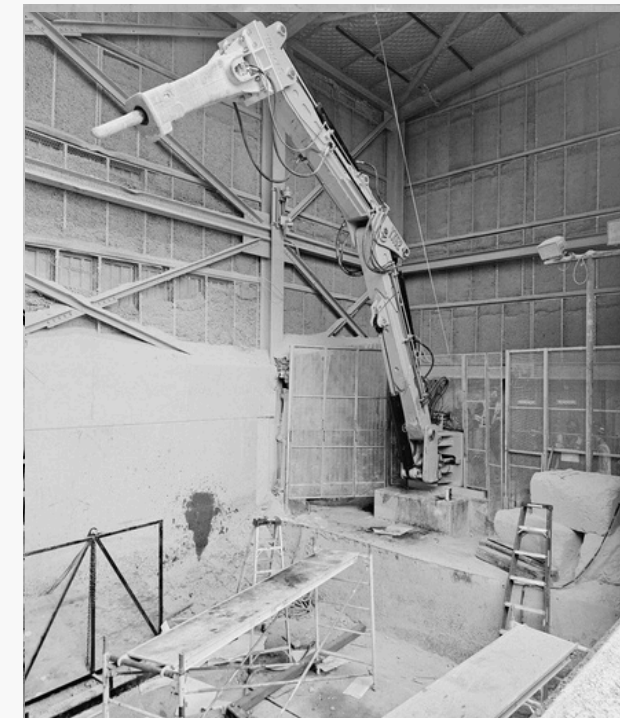
**DIAGEO**

Implementation of a production line in the food sector, coordinating a project lasting over 10 months, involving 10 trades, and a tandem lift of 120,000 lbs in a confined space, under electrical wires.



**WESDOME**

Reconditioning of a mining dust collector, including the modernization and optimization of this critical installation to improve ventilation and filtration performance.



  
**eldorado gold**

Refurbishment of a mining hammer carried out during a planned shutdown, including targeted work to optimize the performance and durability of the equipment.



# The strength of our group

## The services offered

- Rental of professionals (planner, engineer, and project manager) and specialized workforce (electrician, specialized technician, industrial mechanic, and welder);
- Project feasibility study;
- Complete CAPEX project management;
- Support for maintenance departments (supervision and coaching);
- Creation and implementation of preventive maintenance programs;
- Design and certification of custom parts;
- Design and certification of lifting plans;
- Supervision of complex lifting operations;
- Fabrication of welded mechanical assemblies;\*
- On-site welding with CWB certification;
- Workshop fabrication with CWB certification;\*
- Industrial equipment installation;\*
- Inspection, repair, and installation of lifting equipment (overhead cranes) according to CSA B167-16, both on the surface and underground;
- Comprehensive heavy equipment fleet management services.

***For any other project requests, we can assist you through our network of partners!***

\* Service available at our workshop in Val-d'Or.

\*\* Non-decree site, all sites combined throughout 2024.



# Entrust us with your projects

Even the most ambitious ones!



## Phone

(819) 824-5555



## Email

info@groupealtan.com



## Workshop division

1030 Léo-Fournier, Val-d'Or (Qc) J9P 6X8

## Site division

194 George-Dumont, Val-d'Or (Qc) J9P 0B7



## Web

[www.groupealtan.com](http://www.groupealtan.com)



## LinkedIn

[www.linkedin.com/company/groupealtan](http://www.linkedin.com/company/groupealtan)



## Facebook

[www.facebook.com/groupealtan](http://www.facebook.com/groupealtan)

*Feel free to contact us; we are at your complete disposal.*

*We are pleased to contribute to your success by bringing our expertise to the table.*







**GROUPE**  
**ALTAN**

**GROUPE ALTAN CONSTRUCTION INC.**

1030 Léo-Fournier, Val-d'Or (Qc) J9P 6X8, Canada

Phone : (819) 824-5555

Payment notices & Accounting : [info@groupealtan.com](mailto:info@groupealtan.com)

Purchases and accounts payable: [achats@groupealtan.com](mailto:achats@groupealtan.com)

Quotes and P.O. : [soumissions@groupealtan.com](mailto:soumissions@groupealtan.com)

**Invoices** : [factures@groupealtan.com](mailto:factures@groupealtan.com)

NEQ : 1179690640 | TPS : 78496 6020 RT 0001 | TVQ : 12 3155 5427 TQ 0001